

Magazine of the project

Agropuzzle 3



Erasmus+

<i>About the Erasmus+ programme</i>	<i>4</i>
<i>About the project Agropuzzle 3</i>	<i>7</i>
<i>About the partners...</i>	<i>8</i>
<i>Program of the Czech mobility</i>	<i>15</i>
<i>Information about visited places</i>	<i>16</i>

Ladies and gentlemen;

we are offering you the magazine related to the project called Agropuzzle 3. This partnership project is aimed to regional agriculture, small family farms and regional food. The Czech organisation called "Masaryk's Secondary School of Agriculture and Higher Professional School in Opava" won this project due to support of Erasmus+. There are partner organisations from Poland - Agrarian Chamber of Opole; Portugal - Regional Agency for Rural Development RUDE; Spain - Agency for Rural Development ESNEPI; Agrarian University of Romania (Bucharest) and Bulgaria (Ruse). The team also includes the Czech environmental education non-profit organisation called "Natura Opava".

Small business at the regional level is becoming more and more important, while agriculture industry is being neglected although it provides all of us with our primary needs. This electronic project magazine will be printed in 10 issues which will focus on examples of good practice of regional agriculture in the partner countries. It will present organisations involved in the project, their regions, farming community and project activities. We hope that our magazine and project will inspire you and notify you about interesting places or ideas.

Mgr. Radmila Šrajerová
project manager of Agropuzzle 3

About the Erasmus+ programme



The programme is named after the Dutch philosopher Desiderius Erasmus of Rotterdam, known as an opponent of dogmatism, who lived and worked in many places in Europe to expand his knowledge and gain new insights, and who left his fortune to the University of Basel in Switzerland. At the same time, ERASMUS is a backronym meaning European Region Action Scheme for the Mobility of University Students..

By the time the Erasmus Programme was adopted in June 1987, the European Commission had been supporting pilot student exchanges for 6 years. It proposed the original Erasmus Programme in early 1986, but reaction from the then Member States varied: those with substantial exchange programmes of their own (essentially France, Germany and the United Kingdom) were broadly hostile; the remaining countries were broadly in favour. Exchanges between the Member States and the European Commission deteriorated, and the latter withdrew the proposal in early 1987 to protest against the inadequacy of the triennial budget proposed by some Member States.

The programme built on the 1981-1986 pilot student exchanges, and although it was formally adopted only shortly before the beginning of the academic year 1987-1988, it was still possible for 3,244 students to participate in Erasmus in its first year. In 2006, over 150,000 students, or almost 1% of the European student population, took part. The proportion is higher among university teachers, where Erasmus teacher mobility is 1.9% of the teacher population in Europe, or 20,877 people.

In the past twenty years, over two million students have benefited from Erasmus grants, and the European Commission aims to reach a total of 3 million by 2012.

The Lifelong Learning Programme 2007-2013 replaced the Socrates programme as the overall umbrella under which the Erasmus (and other) programmes operate from 2007.

The Erasmus Programme (European Region Action Scheme for the Mobility of University Students) is a European Union (EU) student exchange programme established in 1987. Erasmus+, or Erasmus Plus, is the new programme combining all the EU's current schemes for education, training, youth and sport, which was started in January 2014

The Erasmus Programme, together with a number of other independent programmes, was incorporated into the Socrates programme established by the European Commission in 1994. The Socrates programme ended on 31 December 1999 and was replaced with the Socrates II programme on 24 January 2000, which in turn was replaced by the Lifelong Learning Programme 2007-2013 on 1 January 2007.



Socrates
Comenius



Education and Culture DG
Lifelong Learning Programme

The Erasmus Mundus programme is another, parallel programme that is oriented towards globalising European education. Whereas the Erasmus Programme is open to Europeans, Erasmus Mundus is open to non-Europeans with Europeans being exceptional cases. On 9 May 2012, Fraternité 2020 was registered as Europe's first European Citizens' Initiative. Its goal was to increase the budget for EU exchange programmes like Erasmus or the European Voluntary Service from 2014. To be successful it would have needed 1 million signatures by 1 November 2013. It ultimately collected only 71,057 signatures from citizens across the EU. Erasmus+ (2014-2020), also called Erasmus Plus, is the new 14.7 billion euro catch-all framework programme for education, training, youth and sport. The new Erasmus+ programme combines all the EU's current schemes for education, training, youth and sport, including the Lifelong Learning Programme (Erasmus, Leonardo da Vinci, Comenius, Grundtvig), Youth in Action and five international co-operation programmes (Erasmus Mundus, Tempus, Alfa, Edulink and the programme for cooperation with industrialised countries). The Erasmus+ regulation was signed on 11 December 2013



WHAT ARE THE OBJECTIVES AND IMPORTANT FEATURES OF THE ERASMUS+ PROGRAMME?

GENERAL OBJECTIVE:

- the objectives of the Europe 2020 Strategy, including the headline education target;
- the objectives of the strategic framework for European cooperation in education and training (ET 2020), including the corresponding benchmarks;
- the sustainable development of Partner Countries in the field of higher education;
- the overall objectives of the renewed framework for European cooperation in the youth field (2010-2018);
- the objective of developing the European dimension in sport, in particular grassroots sport, in line with the EU work plan for sport;
- the promotion of European values in accordance with Article 2 of the Treaty on the European Union.

MULTILINGUALISM

Multilingualism is one of the cornerstones of the European project and a powerful symbol of the EU's aspiration to be united in diversity. Foreign languages have a prominent role among the skills that will help equip people better for the labour market and make the most of available opportunities. The EU has set the goal that every citizen should have the opportunity to acquire at least two foreign languages, from an early age. Linguistic support is available for the language used by participants for studying, carrying out a traineeship or volunteering abroad in the framework of long-term mobility activities supported under Key Action 1.

Under Key Action 2, Strategic Partnerships in the area of language teaching and learning will be encouraged. Innovation and good practices aiming to promote language skills can include for example teaching and assessment methods, development of pedagogical material, research, computer assisted language learning and entrepreneurial ventures using foreign languages. Furthermore, funding for linguistic support can be provided when necessary to beneficiaries of Strategic Partnerships who organise long-term training and teaching activities for staff, youth workers and learners.

EQUITY AND INCLUSION

The Erasmus+ Programme aims at promoting equity and inclusion by facilitating the access to participants with disadvantaged backgrounds and fewer opportunities compared to their peers whenever disadvantage limits or prevents participation in transnational activities for reasons such as:

- disability (i.e. participants with special needs): people with mental (intellectual, cognitive, learning), physical, sensory or other disabilities;
- educational difficulties: young people with learning difficulties; early school-leavers; low qualified adults; young people with poor school performance;
- economic obstacles: people with a low standard of living, low income, dependence on social welfare system or homeless; young people in long-term unemployment or poverty; people in debt or with financial problems;

About the Erasmus+ programme

- cultural differences: immigrants or refugees or descendants from immigrant or refugee families; people belonging to a national or ethnic minority; people with linguistic adaptation and cultural inclusion difficulties;
- health problems: people with chronic health problems, severe illnesses or psychiatric conditions;
- social obstacles: people facing discrimination because of gender, age, ethnicity, religion, sexual orientation, disability, etc.; people with limited social skills or anti-social or risky behaviours; people in a precarious situation; (ex-)offenders, (ex-)drug or alcohol abusers; young and/or single parents; orphans;
- geographical obstacles: people from remote or rural areas; people living in small islands or in peripheral regions; people from urban problem zones; people from less serviced areas (limited public transport, poor facilities).
- 12 Programme Guide
- In the field of youth, an Inclusion and Diversity Strategy has been designed as a common framework to support the participation and inclusion of young people with fewer opportunities in Erasmus+. The Strategy is available on the website⁴ of the European Commission.

WHAT IS THE STRUCTURE OF THE ERASMUS+ PROGRAMME?

In order to achieve its objectives, the Erasmus+ Programme implements the following Actions:

KEY ACTION 1 MOBILITY OF INDIVIDUALS

This Key Action supports:

- Mobility of learners and staff
- Erasmus Mundus Joint Master Degrees
- Erasmus+ Master Loans:

KEY ACTION 2 COOPERATION FOR INNOVATION AND THE EXCHANGE OF GOOD PRACTICES

This Key Action supports:

- Transnational Strategic Partnerships
- Knowledge Alliances between higher education institutions
- Sector Skills Alliances
- Capacity-building projects supporting cooperation
- IT support platforms, such as eTwinning, the School Education Gateway, the European Platform for Adult Learning (EPAL) and the European Youth Portal.

KEY ACTION 3 SUPPORT FOR POLICY REFORM

This Key Action supports:

- Knowledge in the fields of education, training and youth
- Initiatives for policy innovation to stimulate
- Support to European policy tools to facilitate transparency and recognition of skills and qualifications,
- Cooperation with international organisations with highly recognised expertise and analytical
- Stakeholder dialogue, policy and Programme promotion involving public authorities,

JEAN MONNET ACTIVITIES

The Jean Monnet Activities will support:

- Academic Modules,
- Policy debate with academic world
- Support to associations,
- The Jean Monnet Activities also provide operating grants to designated institutions which pursue an aim of European interest and organises Studies and conferences with the purpose of providing policy-makers with new insights and concrete suggestions.

SPORT

Actions in the field of sport will support:

- Collaborative Partnerships
- Not-for-profit European sport events
- Strengthening of the evidence base for policy making through studies;
- Dialogue with relevant European stakeholders,

THE NATIONAL AGENCIES

The implementation of the Erasmus+ Programme is mainly implemented as Indirect Management, meaning that the European Commission entrusts budget implementation tasks to National Agencies; the rationale of this approach is to bring Erasmus+ as close as possible to its beneficiaries and to adapt to the diversity of national education, training and youth systems.

The project called Agropuzzle 3 prepares relevant conditions and encourages individuals in the field of agribusiness and farming. This project is aimed at exchange of experiences as well as increase of practical self-confidence, promotion of professional development and growth of the participants who will work together on the issue of farming, support of rural environments, agro-business in selected small family farms, their stories and background. We would like to identify examples of good practice for all six countries, while drawing inspiration which we can then forward to the people in our region as well as the local or regional community of seven partner organizations. We continually support the existing network of organizations; it means the network already arisen in two previous projects and then later developing and taking new partners.

The project is generally aimed at keeping the topic of agriculture alive. Agricultural production provides us with our daily bread. It is really necessary to appreciate everyone who nowadays deals with real work that feeds all of us. It is really necessary to teach the next generation to follow those principles. The next generation should be given the opportunity to learn about new trends and innovations from other EU countries so that the young people can compare these aspects and use the experience as inspiration for their own work. In Europe nowadays, the topic of agriculture (farming) is rather neglected. But it is still very important. In the era of globalization, we are really missing a story of families that jointly run their businesses and affect the rural community. There are also small farms timidly developing; those which allow integration of disadvantaged groups of people who compensate their various forms of disabilities by being in the countryside (physical or mental disabilities). Inclusion of these people shows a good example of solidarity and tolerance of each community within the EU countries.

Agropuzzle 3

PARTNERS OF THE PROJECT

**Masarykova střední škola zemědělská
a Vyšší odborná škola Opava,**
www.zemedelka.opava.cz



Izba Rolnicza w Opolu
www.izbarolnicza.opole.pl



**RUDE - Associação
de Desenvolvimento Rural**
www.rude-adr.pt



**UNIVERSITATEA DE STIINTE
AGRONOMICE SI MEDICINA
VETERINARA DIN BUCURESTI**
www.usamv.ro



**UNIVERSITY OF RUSE
ANGEL KANCHEV**
www.uni-ruse.bg



**Natura Opava
- Czech Republic**
www.natura-opava.org



**Asociación Escuela
de Negocios del Pirineo**
www.esnapi.es



TIME TABLE OF THE PROJECT

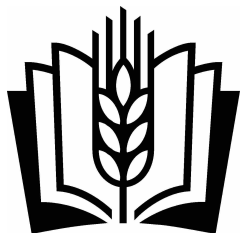
02/2017 - MOBILITY IN CZ (5 DAYS)

09/2017 - MOBILITY IN ES (5 DAYS)

03/2018 - MOBILITY IN PT (5 DAYS)

04/2018 - MOBILITY IN RO (5 DAYS)

06/2018 - MOBILITY IN BG (5 DAYS)



Masaryk Secondary School of Agriculture and Higher Professional School of Opava, allowance organization

Our school is the biggest school in the Czech Republic with a maximal efficiency of education in the fields of agriculture, gardening and biology. The school unites 3 fields of study finished with a leaving exam and with a certificate of apprenticeship, 3 fields of study finished with a “maturita exam”, one extended field of study and its own Higher professional school, which is the only one with a special focus in the Czech Republic and it is also a pilot school in the long-life education.

The school is situated in a beautiful building which is considered a treasure of neoclassical architecture and it is situated in the middle of a park. It has its own dormitory in quiet surroundings of a villa district near the school.

The school has cooperated with many universities. There is a very close cooperation also in the teaching part in the Higher professional school with the Silesian university in Opava. We have been working together on new environmental projects.



About the partners...

Fields of studies of the four-year studies finished with the matura exam

- Agrobusiness – field of studies focused on business in agriculture with specialization on operation and company economics. In this field of studies, we belong to the most successful schools in the Czech Republic. The practice is organized at nearby school farm, which belongs to the model workplace.

- Biology lyceum – this field of studies is focused on purely theoretical studies based on grammar school education with higher percentage of biology subjects. It is mainly for students who are interested in studies at universities with biology focus.

- Protection of nature and environment – it is the only field of studies aimed at those who are interested in nature and who want to fulfill their hobby professionally. We offer excellent conditions, collection of materials of natural products which have been appreciated by many museums of the Czech Republic, beautiful surroundings of the school in a park with many plant species in our valuable park, many species of trees and rocks, errant rocks. This surrounding has been made as a centre of environmental education.

- Chemists – Operator – this subject is completely new at our school, it is connected to a large pharmaceutical company Teva. We educate and train middle staff for chemistry. The pupils also use exclusive equipment and the company's surroundings. The company will support this subject in many different ways.



Fields of studies of the three-years studies finished with the leaving exam and the certificate of apprenticeship:

- Farmer – Field of studies for the best graduates. We offer the possibility of further studies for another 2 years and of gaining the matura certificate. This field of studies is taught in a modern surrounding of a newly built education hall with top conditions for learning.

About the partners...

- Gardener – for this field of studies, we offer top conditions of a new building with classrooms, dressing room, social facilities directly next to the greenhouses, shop and botanical garden.

Extension studies – 2 years with the possibility of gaining the the maturita examination for the graduates of the three-years studies with the certificate of apprenticeship:

- Enterprise – this field of study is very important because of the connection of single levels of education. It offers the chance to continue in the studies directly at our school for the best graduates of professional studies and to gain maturita certificate.

Higher professional school – 3 years, with the possibility for the graduates to gain the degree Dis (diploma specialist) finished with diploma:

- Regional policy of agriculture and country – it is a 3 year long field of studies finished with a diploma and with the degree Dis. (diploma specialist). It is a postgraduate study which is similar to university education with a part of practical work and field trips.

We are currently organizing a conception of the arrangement of the school area. We intent to renew and refill the beautiful park, in which the school is situated. We want to add a dendrological exposition with descriptions of rare woods. We have started to build a new exposition of erratic rocks, rocks and mineral stones of Silesia. There has also been an extension of the botanical garden going on and the construction of fruit garden and vegetable garden. The project, which comprises a summer classroom and a new collection of materials, will extend the use of the beautiful park for education, sport and relaxation. All parts should have not only esthetical but also educative character and they should be used in the class not only for our pupils but also for pupils of basic schools. We have been working on this conception with garden architects, workers of Arboretum in Nový Dvůr and of the Garden Faculty of MZLU in Lednice. This conception has been warmly supported by the municipal authorities of the city of Opava, by professional public and it should help to build a centre of environmental education, which has had a long tradition in our area.





The Farming Chamber in Opole - Poland

The Farming Chamber of the Opole province is a self-government governing unit of the local agricultural local authority acting for the problem solving and is representing that represents the interests of the organizations businesses of entities which are members united in of this chamberChamber. Since 1996 the chamber Chamber is acting forhas represented the farming interests of the province, and has helped influence the development influences the forming of agricultural policies, whilst also and participatesparticipating in the environmental protection of the environment, the local culture, the sightseeing and the general preservation of preserving the cultural heritage of rural areas. Activities of the chamber Chamber are a part of the connected with large-scale support provided to the agricultural environment by coordinating joint actions activities in the area of the farming, with supporting initiatives, thereby not only and creating the image of a modern farmer, and but also supporting the agricultural education in the province.

The chamber Chamber has a legal personality status. Since theThe Farming Chamber was is obliged obligated to fulfil the following tasks:

- conduct operations for the agricultural market;
- action in favourfavor of the improvement of the quality of cultivations and agricultural production;
- develop the cooperation with foreign organizations of farming producers;
- cooperate with the civil Civil service Service in the areas of environmental protection, the health and the country cultural heritage of the countryside.
- consult for activityon the activities of agricultural farms and the organizations associated with the farming sector, including agricultural schools.



Mr. Herbert Czaja - President of the Chamber of Agriculture in Opole

About the partners...

Erasmus + program 2013 - 2020

The Board of the Farming Chamber has decided to prepare and organize international training within the Erasmus + program, where students from the agricultural school will participate under the supervision of Farming Chamber representatives.

In 2015 the Board of the Farming Chamber actioned this decision and organized a meeting in Zespół Szkół w Komornie agriculture school with teachers working in the Erasmus + program. The Office Director, Ms Katarzyna Beleć, and Ms Anna Lubjańska, the representative of the Farming Chamber in Opole, had the opportunity to discuss the program's opportunities regarding the needs of the Farming Chamber. They decided to take the first step and invited teachers from the school in Komornie to cooperate in projects. The next step was the selection of Mr. Slawomir for the position of Projects' Coordinator. Mr Jakoniuk in cooperation with Ms Lubjońska started to prepare the registration documents for the National Agency in Warsaw.

Shortly after the first project application in KA1 action Mobile Learning Individual project "My agropractice" was ready, the next project opportunity arose. A good friend of Mr Jakoniuk, the Czech Republic's project coordinator from Opava, Ms Radmila Srajerova, proposed another project idea in KA2 action Strategic Partnerships for vocational education and training project „Agropuzzle 3”. Both projects were approved in 2016 and are in progress.

In May 2017 the first group of students from Zespół Szkół w Komornie will travel to the Czech Republic for a two week long project meeting. The next group will visit Greece in July 2017.

The first project meeting for „Agropuzzle 3” will take place in Opava in the Czech Republic in February 2017. The theme of the project will be the issues related to operating small farms as family businesses.



Mr Herbert Czaja, the President of the Chamber of Agriculture in Opole, signed the cooperation agreement with the headmaster of Zespół Szkół w Komornie.



Natura Opava - Czech Republic, z.s.

Educational organization called "Natura Opava - Czech Republic" is a non-governmental and non-profit organization that has been dealing with environmental education, training and consultancy in the branch of environmental protection since 1992. Our training programs are aimed to teaching pupils and students to get familiarized with the nature by using own experience. Our motto is - "Learning about the Nature while in the Nature". We also try to provide the wide public with information of natural attractions. Our activities are mainly focused on township of Opava (Czech Republic), Raciborz (Poland) and the region of Amvrakian Bay (Preveza-Greece). During a year, we organize about one hundred seminars, branch exercises and awareness events. We organize nature-scientific expeditions used for making scientific work closer to the younger generation. In cooperation with the Statutory Town Council of Opava, we have regularly been publishing publications about the nature in Opava region in the recent times. Two years ago, we began to issue the magazine called "Opavský Přírodovědný Zpravodaj" (natural-science newsletter of Opava), also with support of Statutory Town Council of Opava. The newsletter has so far had over 9,000 email subscribers. Our activity in vocational education is also quite extensive. We have closely been working with high schools and universities for which we provide branch training and practical lessons within accredited school subjects and also within common lessons associated to involvement of professional experts. We hold methodology lessons in several schools. We are co-administrators and reviewers in prestigious competitions of student works, like for instance Olympic games in biology and secondary-school professional activities at both the district and regional levels.



Magazine and books edited by Natura Opava.



Muzeum Neochori in Greece.



Environmental education in Greece.

About the partners...

Our members have actively been leading professional training both in traditional lessons and in non-formal education. In this perspective and level, we can monitor and specify significant failures of lessons within professional education in schools focused on natural sciences. This experience has brought us to the idea to develop this project. With a team of collaborators from schools of Opava, Poland and Slovakia, we have been preparing useful projects aimed to education for students and young people in the branch of sustainable development, agriculture and nature protection.

We provide consulting services in the branch of nature protection to the wide public. We also provide consulting services in the branch of environmental education and practical lessons of biology to schools. Information of our activities is available at our website:

www.natura-opava.org

Our team includes many experts who are mostly graduates of prestigious universities in the Czech Republic; they are extensively experienced in professional training.



Magazine and books edited by Natura Opava.



Natura Opava - Czech Republic, z.s.

Edvarda Beneše 30, 747 05 Opava

tel: 00420 737 322 616

info@natura-opava.org, www.natura-opava.org

www.facebook.com/naturaopava

Agropuzzle 3

TIMETABLE OF THE CZECH MOBILITY

Sunday 19. 2. 2017	Arrival of the participants Accommodation in hotel Koruna (BG, RO, PL team) Accommodation in the pension Katharein (PT, ES team)
Monday 20. 2. 2017 🚌 9:15	Píšť - Bakery Gobe - products degustation Bohuslavice - Goats farm - visit and degustation Rohov - Brewery - lunch, eventually Brewery tour Malé Hoštice - Rabbit farm Krahof Velké Hoštice - Pony and horse farm
Tuesday 21. 2. 2017 🚌 8:45	Jerlochovice Fulnek - Farm George - Cow breeding - agroturistic centre, meat processing Nošovice - Big brewery - guided tour with degustation Frýdek Místek - Penzion pod Kašnou - lunch - Marlenka - Traditional honey cake production - guided tour with coffee and cake degustation
Wednesday 22. 2. 2017 🚌 9:00	Brantice - VEMAT - Beekeeping, supplies for beekeepers - Cider production with degustation Krnov - Townhall restaurant - lunch - Privat brewery Nachmelená opice - guided tour with degustation Opava - Coordinator's meeting Optional: common evening in the jazz pub with friends and jazz music
Thursday 23. 2. 2017 🚶🚌 9:00	Transfer from Opava to Novosedly Hustopeče u Brna - Almonds orchards, almonds products, Haban cellars - Sheep farm Nový Přerov - Sheep farm Novosedly - winery Kovács - guided tour and guided wine tasting - accommodation and food
Friday 24. 2. 2017 🚶🚌 9:00	Transfer from Novosedly to Opava - possibility to catch train to Prague in Brno Olomouc - historical city center, Unesco heritage Opava - accommodation in hotel or pension

FARM OF HALFAR FAMILY

Lesní 65, 747 19 Bohuslavice,
www.halfarovicfarma.websnadno.cz

It is a small family farm with sheep, goats and poultry, producing own food and selling the products both to distributors and to customers coming to the yard. The Halfar family farm located in Bohuslavice near Opava also offers products made of cow's milk. Ms Anna Halfarová makes delicious threads which are manually pulled steamed cheeses containing only cow's milk, rennet, cultures for a particular type of cheese and salt. You can also enjoy yogurts made of cow's milk, cultures intended for yoghurt production. And there are strawberry or blueberry jams to be used for flavouring. The cream hand-picked from cow's milk is then pasteurized and whipped; it is the basis for soft butter; it is manually filled into traditional moulds.



GOBE BAKERY

gobe@volny.cz, www.pekarstvigobe.cz

Pekařská 203/2, Píšť 747 18

The bakery Gobe spol. s r.o. (Ltd.) was founded in 1992. The name GOBE comes from colloquial translation of German words "golden" and "Bäckerei" (golden bakery), using the first two letters of these words. Now the company has 26 employees; it has own premises including the area on which it operates retail business for food, while selling the widest range of its own products. The company supplies bakery products to the surrounding districts of Ostrava and Opava, while cooperating with about eight dozens of customers. The company does not try to compete with large industrial bakeries. Instead, it focuses mainly on traditional character, uniqueness and diversity of production. The company's management is convinced of correctly chosen direction when taking into account the fact that the company has regularly ranked in the highest places in the annually held prestigious competition "Baking Saturday", in both non-professional and professional evaluation. In the 18-year history of this competition, the company Gobe s.r.o. (Ltd.) won the highest prizes as the best bakery within the time period of all 18 years in which the "Baking Saturdays" have been held in the open air museum in the town called Rožnov pod Radhoštěm. The GOBE bakery is also known for its wedding cakes which have been baked for years according to traditional home recipes.



PUB "U KOMÁRKŮ"

www.ukomarku.cz

Slezská 86, 747 25 Rohov



Pub and mini-brewery "U Komárků" Come to us to enjoy our specialities baked in the beechwood oven; let yourself drawn into the atmosphere of a pub of the 30s years of the last century and enjoy relaxing moments while drinking beer from our own brewery. We brew beer using traditional non-pasteurized method; it means beer retains all the vitamins "B" as well as other healthy substances. We have been baking specialities of our kitchen since 2001, using a special oven (on beech wood only); this oven is called Golem. This is the unique design of the three-chamber oven fitted with two separate outlets into the chimney. The system is protected by the Czech Patent Office as a utility model. It was not easy to build up the oven. It was very difficult to find a oven man who could be able to meet our requirements to make the oven fully functional. We have found such a man in Slovakia. It is interesting that the whole project of the oven is drawn up on the wall already built; the oven man let only his feelings to lead him. And he was very skilled - as we found out later. He comes from the third generation of professional oven men.



KRAHOF FARM

Petr Podešva

Opavská 148, 747 05 Malé Hoštice

The Rabbit Farm in Hoštice is a small family farm specializing in supplies of fresh eggs, chicken and hens directly to customers. Main production consists in breeding slaughter rabbits - Hyla breed hybrids. The farm works on the basis of freshness of products and personal contact with customers. The company holds the selling stand two times a week at the farmers' markets. Domestic rabbit (*Oryctolagus Cuniculus* f. *Domesticus*) is a domesticated type of the wild European rabbit. The wild rabbits were bred by the ancient Romans too, using so-called *Leporariums*. The meat was considered as great delicacy. Nowadays, the rabbit meat is very popular.

However, it is also a very shortcoming product in shops. The rabbit meat is easily digestible. It has fine muscle fibres, the minimum amount of collagen and low contents of fats. With its texture and composition, it resembles meat of poultry. The advantage of the rabbit meat lies in shorter heat treatment time and better dietary properties.



HREBCIN HF

www.hrebcinhf.cz

The HF stud farm was founded in 1993 by Stanislav Hošák and Aleš Fiala. This breeding is based on two families of sport-proven horses of Hannover type. The HF stud farm is represented by two centres. That one with breeding operation in the village called Velké Hoštice (Aleš Fiala) and that one with sport operation in the village called Životice near Nový Jičín (Stanislav Hošák and Jana Lošáková). In Velké Hoštice there are brood-mares with foals and also studhorse Radegast. In Životice near Nový Jičín there is breed of young mares at the age up to three years; there is also training of young horses as well as sporting activities of horses both owned by our stud farm and those owned by other partners and horse owners. Stud-horses. Our stud farm has mainly been cooperating with the testing breed of Horymas managed by Kincl family. Our stud farm has largely been attending the breeding events held in the Czech Republic. It is known well that we struggle to present our breed even in the foreign countries while focusing on Hannover contacts.

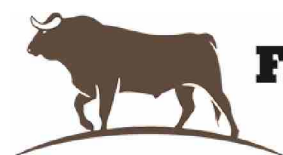


FARM GEORGE

Jerlochovice 121, 742 45 Fulnek – Jerlochovice

www.farmageorge.cz

Biofarm George is located in the picturesque environment of Odra hills, near the town called Fulnek, in the adjacent area called Jerlochovice. We manufacture high-quality BIO veal and beef meats, farming on 310 hectares of grasslands with about 200 pieces of beef cattle of the breeds called Simmental and Limousine. There is qualified and experienced personnel educated in the field of agriculture and working with love and exemplary care. The farm is fitted with cutting-edge agricultural technology which is environmentally friendly and allows achieving high productivity. We produce the cattle that primarily provide organic veal meat of the highest quality.



FARMA GEORGE

FULNEK - JERLOCHOVICE



NOŠOVICE BREWERY

www.radegast.cz

Radegast brewery was founded in Nošovice on 3 December 1970; it is owned by the company called Plzeňský Prazdroj s.s. (Inc.) with the majority shareholder SABMiller. When the first beer brewer Jaromír Franzl brewed Radegast beer in 1970, it was quite different due to its characteristic bitterness compared to other beers in the market; this beer quickly attracted many fans and supporters. However, in recent years, more and more beers have been approaching Radegast with their bitter taste. We want to confirm our commitment saying that "Life is Bitter. Thanks God". And again, we must be quite different. This is why we decided to make new beer, fuller and bitterer one. Our decision was also supported by success of seasonal offers, such as "Radegast Extra Bitter", Radegast Dark Bitter" or "Radegast Fajront". We use three types of hops from Moravian hop gardens to brew the new lager. In addition to the varieties of "Žatec Medium-ripening Red Beer" and "Brewer", we have also chosen other Czech variety called "Saaz Late" which is considered as the future of Czech brewing due to its high quality. Beer has been brewed while using traditional decoction method of mashing and triple process of hopping. The lager holds the protected territorial mark of "Czech Beer". Brewers from Nošovice gave the new beer all their skills, experience and a piece of their hearts. Mr. Ivo Kaňák, the main author of the recipe and director of Radegast Brewery, says: "It is the best beer we have ever brewed." Radegast was given the award of "Czech Beer 2016" in the traditional beer tasting competition of the Czech Association of Breweries and Malt Plants, taking the first prize in the category of light lagers.



LUKÁŠ MATELA
BEEKEEPER FROM BRANTICE

lukas.matela@vemat.cz

385 Brantice, 793 93, Brantice

Lukáš Matela is a bio beekeeper who organizes summer camps of Langstroth beekeeping, sells home-made honey and produces other supplementary honey products as mead or honey wine.

Along with his father Leopold he presents himself as a hobby beekeeper, in total they take care of 100 bee colonies bred in small units (5, 4). This type of bees is more resistant to varroosis. Lukáš and his father take also part in the project about VSH bees breeding. To prevent varroosis organic acids are used only. Lukáš Matela has been publishing articles about beekeeping in the Czech beekeeping magazine "Modern Beekeeper". His Beekeeping aim are Testing of the bee colonies' features and placement of inseminated mothers.

- Locality: Brantice, district of Bruntal
- Altitude: 350-650 metres above sea level
- Number of bee colonies: aprox. 100
- The line/ tribe bred: Vigor, comparing Singer
- Hive type: NN Langstroth 2/3 448 x 159 mm



NACHMELENÁ OPICE BREWERY, KRNOV

www.nachmelenaopice.cz

Is a small private brewery which produces mainly small batches of high-quality beer. Our beer is not filtrated and pasteurized. Our beer is brewed using its original gravity and is not adulterated any more.

The most common connotation of unfiltered and unpasteurized beer is that these features are somehow extra added. It really is a bonus as the beer remains in its natural, unchanged version, alive and with natural yeast content. This kind of beer is usually characteristic with its cloudy aspect and the yeasts' flavour is apparent in both its smell and taste. Yeast is a rich source of vitamin B, so compared to different types; it is a real vitamin bomb.

It is commonly said that one can get drunk easier and quicker when drinking unfiltered beer. Although this myth is definitely not true, as the per cent of alcohol remains the same, and in this factor, the filtration makes no difference. equipped with sheathed cooling system which allows us to control the temperature at fermentation and late fermentation more precisely, as well as with internal sanitation for maximum ensuring of surface cleanness.

On the other hand, unfiltered and unpasteurized beers have shorter expiration date and need more careful shipment, storage and tapping. Small local breweries are focused mostly on these types of beer as it is usually sold in their local beer houses and pubs or a direct distribution channel is employed. Yet big breweries prefer more "treated" beer types, because long shipment all across the Czech Republic and more than 3 month storage in supermarkets' stock is usually needed.

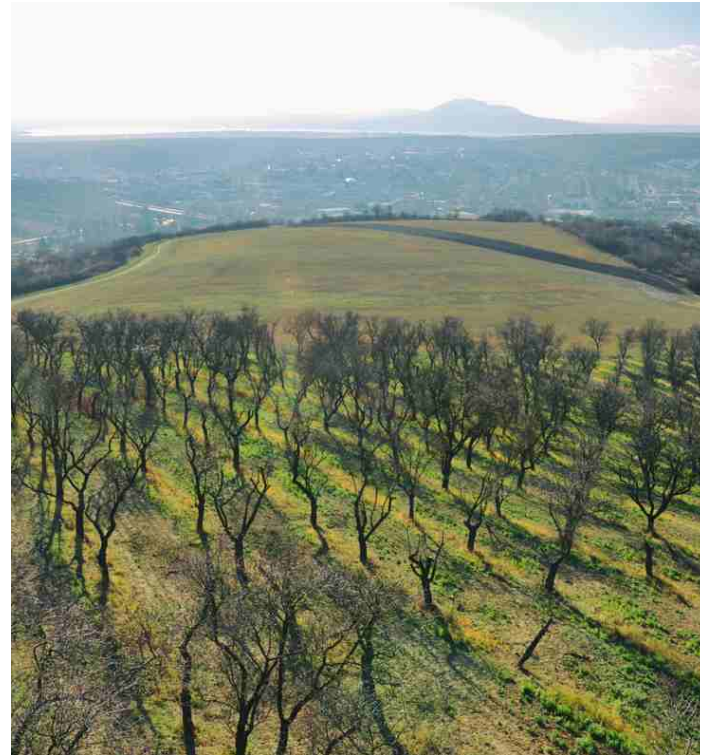
Heart of our brewery is two-vessels stainless brewhouse with capacity of 10hl of sprouted wort with electro-oil kettle and integrated whirlpool tun. Malt is prepared in roll mill and is manually dosed to lauter tun.

Main and late fermentation takes place in cylinder conical tanks (CCT) with capacity of 10 and 20hl. Don't worry, we are not talking about enormous tanks used elsewhere to speed up production. During main fermentation we leave the tank open, gather the cover up, observe temperatures and process as in open fermentation room. During late fermentation tanks are closed and beer is left at low temperature for necessary period of time. Tanks are equipped with sheathed cooling system which allows us to control the temperature at fermentation and late fermentation more precisely, as well as with internal sanitation for maximum ensuring of surface cleanness.



HUSTOPEČE IS A TOWN OF ALMOND TREES AND EXCELLENT WINE

Almond orchards, almond fruits, good wine and great fun? All of this can be found in Hustopeče. This town used to be the largest wine growing municipality in the Czech lands in the 18th century. There is long tradition of wine production in this region. Local burghers were always finding source of pleasure and also livelihood in wine. Vineyards around Hustopeče town had an area of over 1,350 ha. However, the local wine culture greatly declined after World War II. In the 60s of the last century, their area was 89 hectares only. Today, the situation is a bit better and we can find vineyards on 273 hectares. Also, quality of local wines is constantly increasing. Wine lovers can enjoy this region very well. Winemakers from Hustopeče grow their grapes very carefully, taking care of the landscape and the environment. For example, they reduce crops yields on each bush so that the harvest reaches the best results; they also try to use tools to protect the vineyard, those which are milder and therefore also more environmentally friendly.

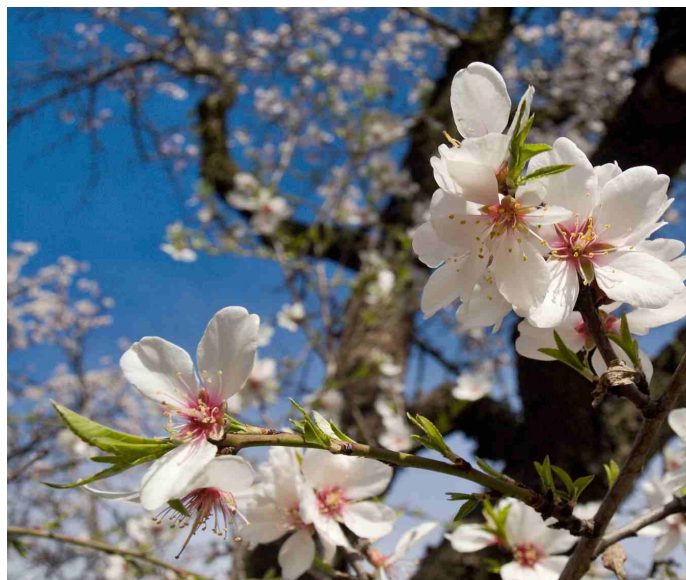


ALMOND ORCHARDS

WHY HERE IN HUSTOPEČE?

Hustopeče town is located in South Moravia - it is a warm area. The history of almond trees in Hustopeče goes back to the 17th century. However, the first large-scale plantings began after 1949. This was mainly due to the fact that imports of almonds from other - mostly capitalist countries (Spain, Italy or Greece) were not required. Therefore, there were almond orchards appearing in Hustopeče. In the times of their greatest expansion, you could see more than 50,000 almond trees there. Gradually, however, the almond orchards began to retreat. There came apricots instead of them. And also economic conditions were changed. Nobody was interested in the harvest from the orchards; they remained completely unused and unmaintained. Finally, there remained only two orchards with the area of 4 hectares. After changing the owners, these orchards were about to completely disappear. The rescue came almost too late; the rescue came from the Town Hall of Hustopeče which took care of preservation of this Central European rarity. The last thousand remained after the original 50 thousand trees.

In the almond hiking route there are two almond orchards, five information panels and four wooden resting places where you can take a few minutes of relaxation. Hustopeče observation tower was opened in 2012. There has been a great interest of tourist since then. No wonder. It is located in a beautiful place called Hustopečský Starý Vrch (Old Hill of Hustopeče), offering a great view of the surrounding areas. Moreover, the almond orchards are located at the altitude of 303 metres above the sea level, around the observation tower. This place is really amazing. The observation tower was designed by the architects Martin Novák and Antonín Olšina. It is 17.4 metres high. In the viewing point of the observation tower, you can enjoy spectacular view to near Pálava region and also to the entire countryside full of vineyards, orchards and picturesque villages.



VINAŘSTVÍ KOVACS S.R.O.

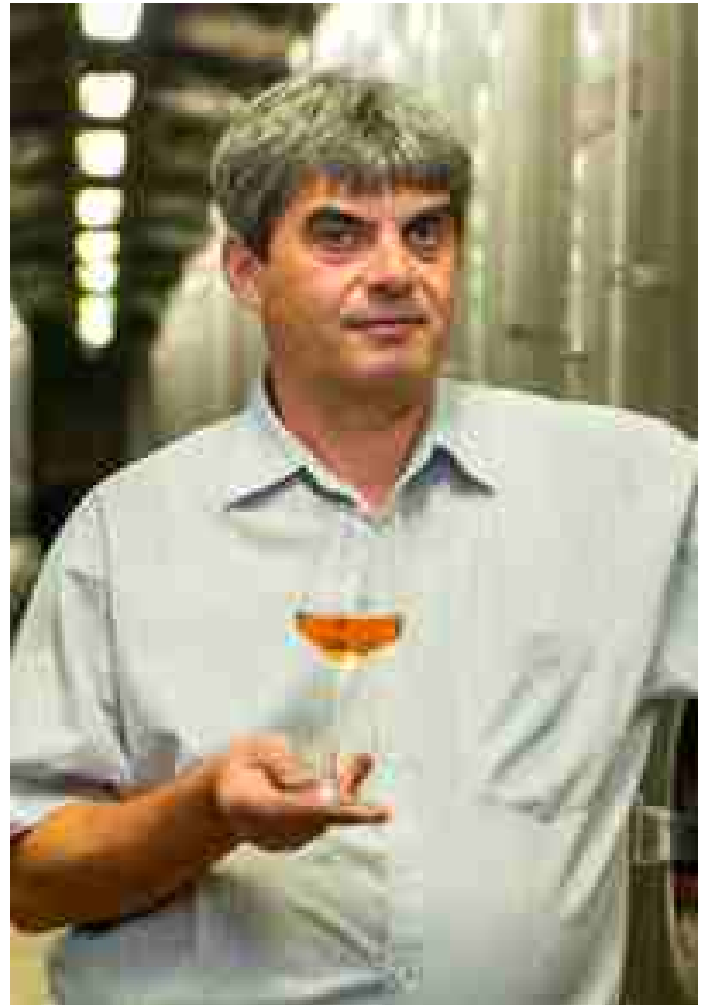
(KOVACS WINERY)

www.vinarstvi-kovacs.cz

Kovacs Winery is a small family winery based in the village called Novosedly, Moravia region. The winery continues in the long-time family tradition of growing grapes and production of premium wines focusing on the original roots. Kovacs winery runs its business on the area of 35 hectares of own vineyards; annual production reaches nearly 200 thousand bottles of wine made of own grapes.

When producing wine and when being in the vineyards, the company emphasizes the most unique location and soil composition on individual vineyard lines.

Farming on the vineyards is carried out carefully in harmony with the nature, according to the rules of organic farming. Very experienced grower, winemaker and enologist Mr. Alois Černík has personally been taking care of the vineyards and wine production for nearly 15 years.



JÁŇŮV DVŮR

Jáňův dvůr is a historic farmhouse located in the southernmost corner of our country, in the wine village called Nový Přerov, on the border with Austria.

www.farma-podyji.cz

In addition to horses, we also breed sheep and goats. You might think that these animals belong rather somewhere in the mountains. Why are they here in the middle of vineyards...? Yes, sometimes the tongues of our goats try out the wine grapes too. However, mission of our herds is quite different. In the local traditional farming area, the sheep and goats have been bred for ages. However, they have always fed off the areas which could not be managed in any other way. For example, a considerable part of the nearby area called Pálava, which you can see in the picture, is not forested due to the fact that it was fed off by small herds coming from neighbouring villages. Step by step, there were unique areas appearing, mainly in terms of landscape and nature protection; however, they could be overgrown and often irreversibly disappear without grazing. And those areas are the place for our herds to live in. They bring tinkling bells and lively atmosphere back to the local hospitable region.

We keep pure breed of sheep of Romanov which includes around 200 animals; then we also keep the Kashmir goats which produce high-quality hair suitable for yarn spinning and production of premium clothes. We breed brown goats for milk; then we produce fresh white cheese in small batches. The entire breeding works according to organic farming principles. Our lovely Romanov sheep can be seen when grazing, for instance during your excursion to the National Park of Podyjí, above the town called Znojmo, in the well-known moorlands called Kraví Hora (cow's hill), near Načeratický Kopec (Načeratický Hill), then also in the vast savannah of Dunajovické Kopce (Dunajovice Hills); here you can view Pálava region. Sometimes, you can meet them in several locations in the protected area of Pálava. Winter feeding - we produce high-quality meadow hay by ourselves, having own technique. Meadows we manage give us 150 tonnes of hay, which is certainly worth a lot of work.



OLOMOUC

Olomouc is a city in Moravia, in the east of the Czech Republic. Located on the Morava River, the city is the ecclesiastical metropolis and historical capital city of Moravia. Today it is an administrative centre of the Olomouc Region and sixth largest city in the Czech Republic. The city has about 100,154 residents, and its larger urban zone has a population of about 480,000 people.

Olomouc contains several large squares, the chief of which is adorned with the Holy Trinity Column, designated as a UNESCO World Heritage Site. The column is 115 ft (35 m) high and was built between 1716 and 1754. The city has numerous historic religious buildings.

The most prominent church is Saint Wenceslas Cathedral founded before 1107 in the compound of the Olomouc Castle. At the end of the 19th century, the cathedral was rebuilt in the neo-Gothic style. It kept many features of the original church, which had renovations and additions reflecting styles of different ages: Romanesque crypt, Gothic cloister, Baroque chapels. The highest of the three spires is 328 ft (100 m), the second-highest in the country (after Cathedral of St. Bartholomew in Plzeň). The church is next to the Bishop Zdik's Palace (also called the Přemyslid Palace), a Romanesque building built after 1141 by the bishop Henry Zdik. It remains one of the most precious monuments of Olomouc: Such an early bishop's palace is unique in Central Europe. The Přemyslid Palace, used as the residence of Olomouc dukes from the governing Přemyslid dynasty, stood nearby.

Saint Maurice Church, a fine Gothic building of the 15th century, has the 6th-largest church organ in Central Europe.

Saint Michael's Church is notable. The Neo-baroque chapel of Saint John Sarkander stands on the site of a former town prison. At the beginning of the Thirty Years' War, the Catholic priest John Sarkander was imprisoned here. Accused of collaboration with the enemy, he was tortured but did not reveal anything because of the Seal of Confession and died. The torture rack and Sarkander's gravestone are preserved here. He was canonized by Pope John Paul II during his visit in Olomouc in 1995.

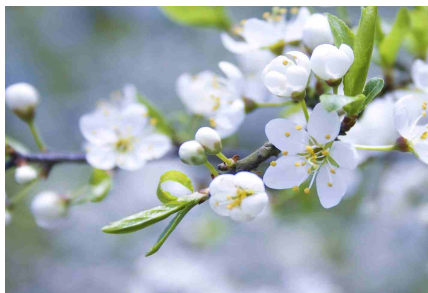
In the largest square in Olomouc (Horní náměstí, Upper Square), in front of the astronomical clock, is a scale model of the entire old town in bronze.

Palacký University, the oldest in Moravia and second oldest in the Czech Republic, was founded in 1573 as part of effort to reestablish Roman Catholicism in the country. The university plays a very important role in the life of the town: With over 25,200 students (including those at Moravian College Olomouc), Olomouc has the highest density of university students in Central Europe. Many of the town's services are student-oriented.



Information about visited places





Magazine of the project

Agropuzzle 3